

Quick guide

VNC connection to the SSC

Available function:

as of version V06/2023

Table of contents

| | |
|---------------------------|---|
| General notes | 2 |
| Settings on the SSC | 3 |
| Example TigerVNC..... | 4 |

Imprint

© 2023

SINGLE Group GmbH

Ostring 17-19
73269 Hochdorf
Germany
Tel: +49 7153 3009 0
Fax: +49 7153 3009 50
Web: www.single-temp.de

General notes

The VNC viewer function was tested with the VNC viewer "TigerVNC". These operating instructions describe the use with TigerVNC. In principle, other viewers can also be used.

In advance, the SSC must be connected to the network with a LAN cable. Single devices with SSC controllers typically have an RJ-45 connector on the front of the device into which the LAN cable is to be plugged.

A fixed IP address and subnet mask can be stored in the Communication menu. This is recommended because the VNC viewer uses the IP address to identify the device.

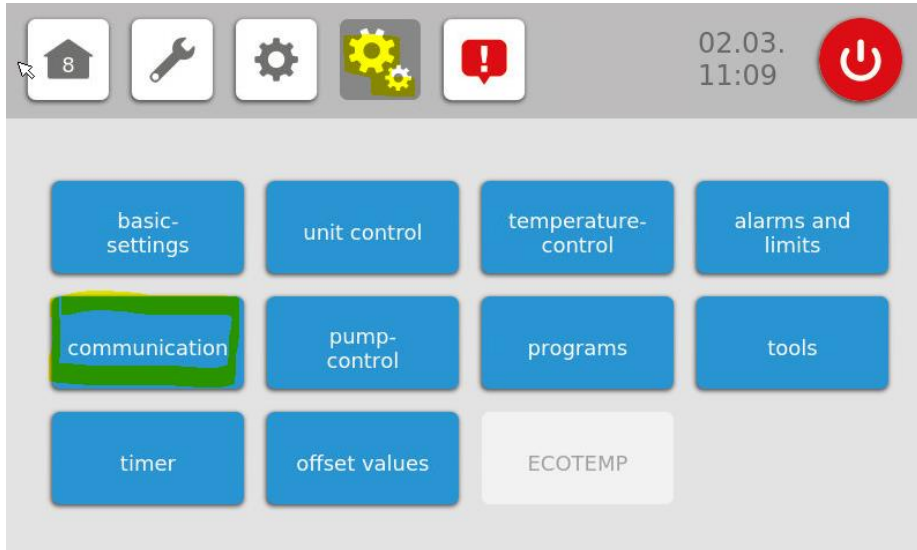
Important NOTE:

The SSC may only be operated with the mouse via the VNC connection, as this corresponds to the operating concept of the touchscreen.

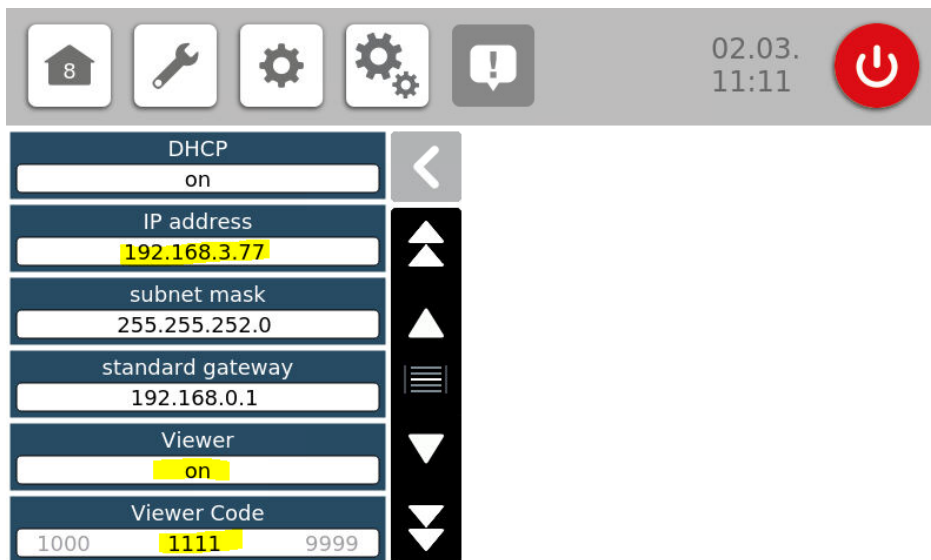
Key combinations may send commands that are not intended by the user, which may cause the visualization to be hidden or terminated, among other things. Should this occur, it must be remedied by a voltage reset of the controller.

Settings on the SSC

Switch to the menu -> Communication



- Set viewer code as long as the viewer is switched off (delivery state 1111)
- Switch on viewer
- Remember IP address



Now a connection can be established from the VNC viewer.

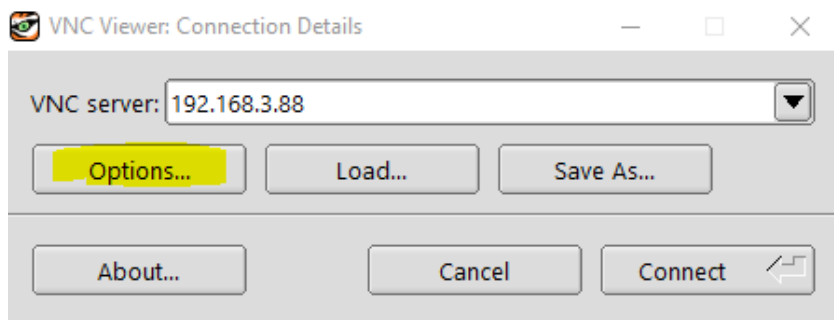
Example TigerVNC

Download & Configuration

Tested and recommended by Single is the VNC viewer "TigerVNC".

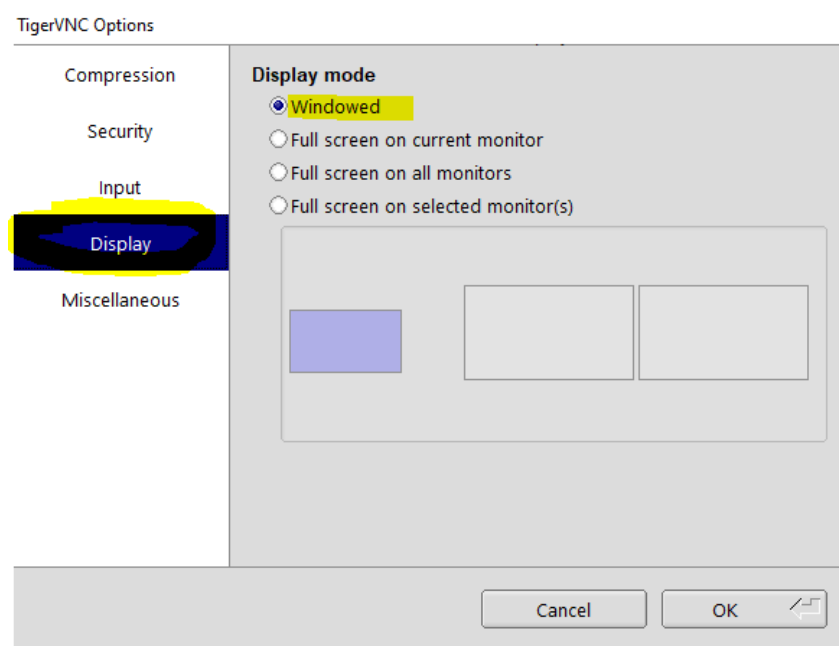
<http://tigervnc.bphinz.com/nightly/viewers/vncviewer-1.13.80.exe>

Download the viewer and then open the .exe file.



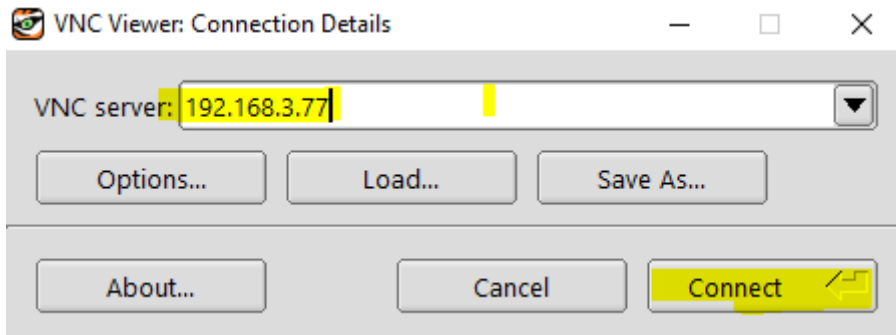
At the first start, adjust the display mode via the "Options" button.

Select the "Windowed" display mode here.



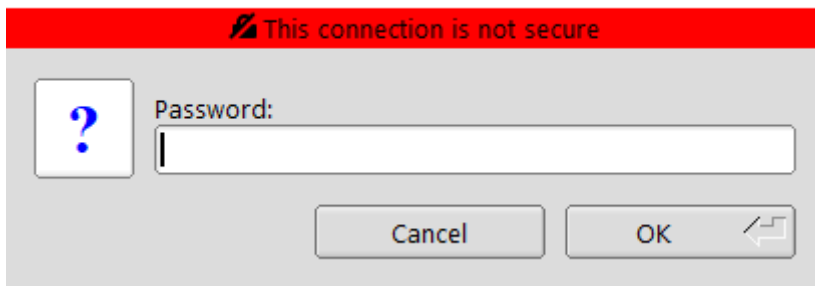
Establish connection to the controller

Enter IP address and press "Connect"



Enter the viewer code in the Password field and click OK.

VNC authentication



Connection is then established.

